



YOUR PARTNER IN
RESEARCH AND
INNOVATION

BRIDGING GENES
PHENOTYPES AND
ENVIRONMENT



phenomin
EXCELLENCE IN MOUSE PHENOGENOMICS

Infrastructure for Mouse Phenogenomics



- Modeling human diseases
- Understanding the function of genes
- Drug discovery, target validation and risk assessment
- Biopharmaceutical and biotechnology innovations

Providing researchers with SERVICES in

- Transgenesis (plasmid, BAC)
- Targeted mutagenesis (ES cell)
- Mutagenesis through IKMC recombinated ES cells
- Nuclease genome engineering (CRISPR/Cas9 or TALEs) **"NEW"**
- Production of recombinated ES cells
- Gene expression validation and copy number determination
- Functional validation of genetic modified mouse model



GENETIC ENGINEERING
AND MODEL VALIDATION

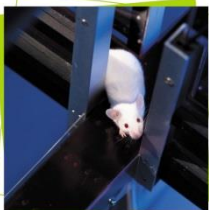
- Health sanitary controls
- Maintenance of health status
- Housing and breeding
 - SOPF, SPF, conventional and BSL2-BSL3
- Validation of mouse models
 - Gene expression testing
 - Copy number determination
- Cryopreservation (Embryos-sperm)
- Distribution (Embryos-sperm, living mice)



ZOOTECHNY



ARCHIVING AND
DISTRIBUTION



PHENOTYPING

- Clinical phenotyping
- In vivo imaging
- Drug screening, derisking strategy
- Bio imaging under BSL3 conditions
- In vivo disease models

Lung disease, Asthma, Lung inflammation
Peritonitis (LPS, Thyoglycolate, poly:IC, Zymosan A)
Hypertension, Cardiac hypertrophy, Diet-induced atherosclerosis
Diet-induced obesity, Diet-induced Diabetes
Memory and learning deficits, Alzheimer
Orthotopic cancer models
Design vaccine assays, Immunization modes (TNP-KLH)
EAE-Experimental autoimmune encephalomyelitis

Supporting researchers

- PHENOMIN helps researcher by offering **high-quality services** and **cutting-edge technologies** in mouse mutagenesis and phenotyping. PHENOMIN will set standards for **systemic phenotyping** of mouse models by and for **archiving and distribution** of mouse mutants.
- The team has also developed a strong expertise in **statistics and data mining**. In-depth analysis performed across phenotyping studies allows a better understanding of biological systems and optimizes processes and designs them to reduce the number of animals used. Each center of PHENOMIN is **approved by quality management system standard** reflecting its aim to provide customers with research services consistent with their regulatory and ethical requirements.
- PHENOMIN **practices refinement** both in housing and in experimental protocols and promotes **welfare approaches** at each step of your work with mice to meet animal well-being as far as possible.



PHENOMIN
1 rue Laurent Fries
67404 Illkirch Cedex - France
contact@phenomin.fr

www.phenomin.fr



INSTITUT CLINIQUE DE LA SOURIS, STRASBOURG

Large scale facility for generation, phenotyping and pharmacology projects



LABORATOIRE "TRANSGÉNÈSE ET ARCHIVAGE D'ANIMAUX MODÈLES", ORLÉANS - VILLEJUIF

Transgenesis, imaging, archiving and distribution



CENTRE D'IMMUNOPHÉNOMIQUE, MARSEILLE

Designing mouse models to decipher immunity and infection

Event in June 2015 ! International course announcement
Provisional Program and Registration
<https://advanced-school.phenomin.eu>



www.phenomin.fr